

INSTRUMENT APPROACH CHART - ICAO

SHERBURN-IN-ELMET

29081

22

090°

270°

35

19

360°

MSA 25NM ARP

A/G 122.610

SHERBURN RADIO

AD ELEVATION 26

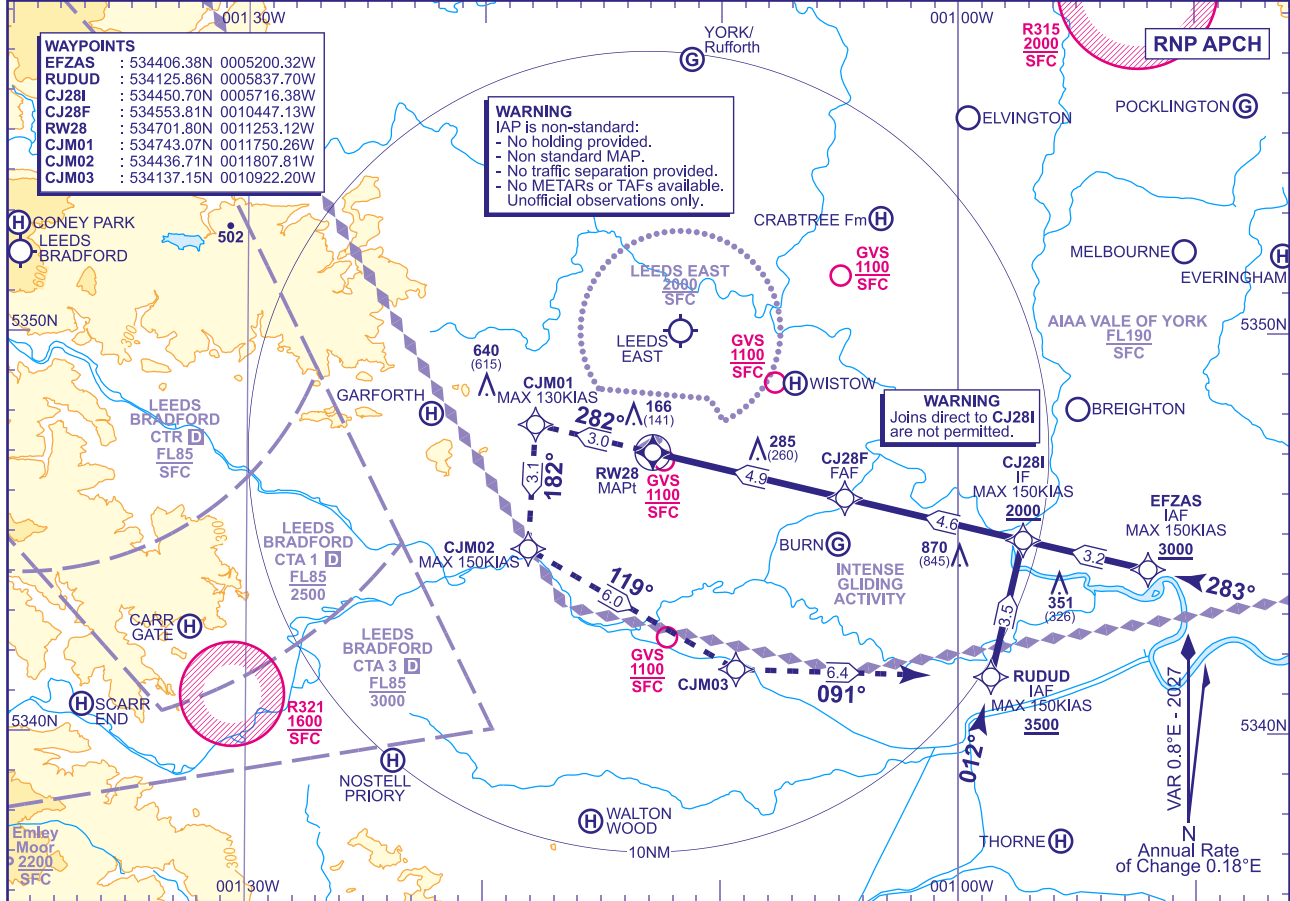
THR ELEVATION 25

OBSTACLE ELEVATION 870 AMSL (845) (ABOVE THR)

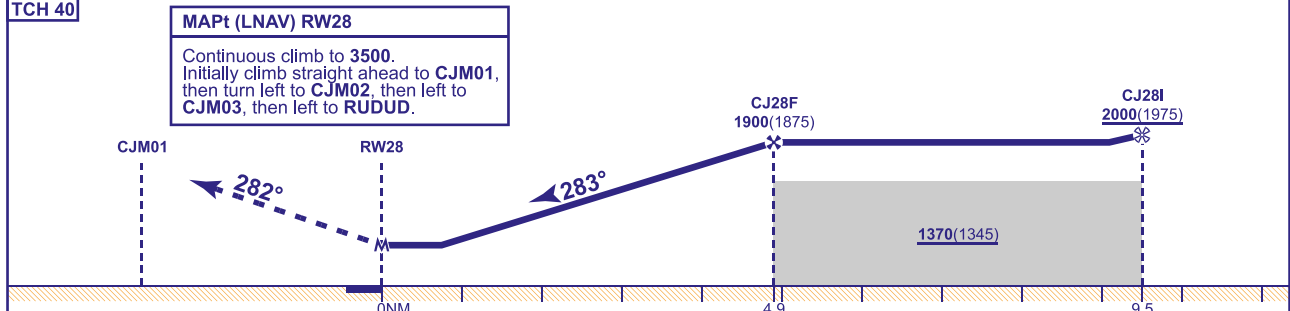
BEARINGS ARE MAGNETIC

RNP RWY 28 (ACFT CAT A,B)

TRANSITION ALTITUDE 3000



RECOMMENDED PROFILE Gradient 6.12%, 372FT/NM			
NM to RW28	4	3	2
ALT (HGT)	1550(1525)	1180(1155)	810(785)



Aircraft Category		A	B	Rate of descent	G/S KT	160	140	120	100	80
OCA (OCH)	LNAV	540(515)	540(515)		FT/MIN	990	870	740	620	500
VM(C)OCA (OCH AAL)	Total Area	630(604)	630(604)							

NOTE 1 Caution: Procedure lies close to Leeds CTA/CTR. Aircraft not in receipt of a zone transit clearance must remain clear.
2 Caution: Proximity of Leeds East Airport, 3NM to the north.